



KOMIYA

WORLD BEYOND YOURS

Shepherd Goes the *extra* Miles

@KOMIYA | JANITORAI

Komiya

Editor-in-Chief

Komiya

Thanks for proofreading my first message.

Managing Editors

**Rion
Devi**

Visual Designer

Komiya

Art Director

Komiya

Photographers

**Niji
Midjourney**

Authors Contributing

Ambrose



email for request coming soon@
komiya.com

New York City to Illinois.



From KOMIYA

*This is a **love letter for Ambrose**.* I missed your birthday posting by a mile but I will be going all out with this shit just for you—that includes a curated magazine-visual. You have been such an amazing friend to me and getting to experience your brilliance when it comes to creative projects and worldbuilding has driven to go all out with all my works no matter how small. You have helped me discover artistic endeavors that essentially became my style.

You have been an amazing treat to have. Every conversation I have had with you has been nothing short of fulfilling and utterly feels like home (lol) especially in the context of our cultural synchronicity. You have become a somewhat fix for me in the community for us pilipino creators.

You have taught me a lot of things in the short span I have known you and I hope we continue to. Hoping you feel better soon, *here is your belated birthday gift. I hope the best for you, blessings to come and creative projects to tackle with heart.*

To, Ambrose.
With love.

Editor-in-Chief

KOMIYA Magazine



Exclusive with Illinois' Finest DILF.

Interview



Chicago's financial world knows **Shepherd Miles** as the iron-willed *manager at Six Corners Financial Partners*, a man who commands boardrooms with the same ease as he does silence. His reputation precedes him: a no-nonsense strategist with a penchant for black coffee and sharper words. But behind the stern exterior lies a paradox.. **a man whose success is as much about his relentless discipline as it is about the quiet, aching vulnerability he refuses to name.**

When I arrive at his office, Shepherd is mid-lecture, his deep baritone slicing through the hum of computers. "You call this a portfolio? A child with a crayon could diversify better." The junior analyst scurries off, and he turns to me with a sigh, running a hand through his silver-streaked hair. "Komiya, right? Sit. I've got twenty minutes."

"Finance isn't about luck. It's about outworking every idiot who thinks it is."

His office is ruthlessly organized—no family photos, just a skyline view of Chicago and a single handmade clay mug (Mao's freshman year art project.). When asked about his success, he deflects. "It's not rocket science. Show up, outwork everyone, and don't cry when clients act like idiots." But his daughter, **Mao Miles**, offers a different perspective: "Dad's a *closet romantic*. He'll grumble about my 'impractical' art degree, *then slip me rent money 'by accident.'* He thinks he's subtle."*

Shepherd's leadership is a study in contradictions. His team mutters about his "tyrant-level standards" but admits they'd follow him into financial war. "He'll rip your report apart, then stay until midnight to fix it with you," one associate confides. His ex-wives (two, per public records) declined to comment, but his current colleagues hint at a softer core. ***"Caught him once reorganizing a certain colleague's workload 'because they looked tired.' Denied it, of course,"*** smirks a senior partner.



Mao Miles

Art Student /
Daughter

CW



Elizabeth Grey CEO of Six Corners Financial Partners

Part-Time CEO, Full Time Sugar Mommy.

BY KOMIYA

Six Corners was supposed to be a one-off. Here's a teaser expanding this universe anyway—why? We need more milk in the world that's all. Keep your eyes out for this absolute icon.

Santos

Office Heartbreaker



Santos.

Six Corner's Infamous Heartbreaker In Love?

Santos was a character that popped up when I was testing Shepherd and I absolutely fell in love with the damn himbo. He might be slow on the uptake but he always did say he's a **DominiCAN** not a **DominiCANT**.

KOMIYA Magazine

teaser

Scene



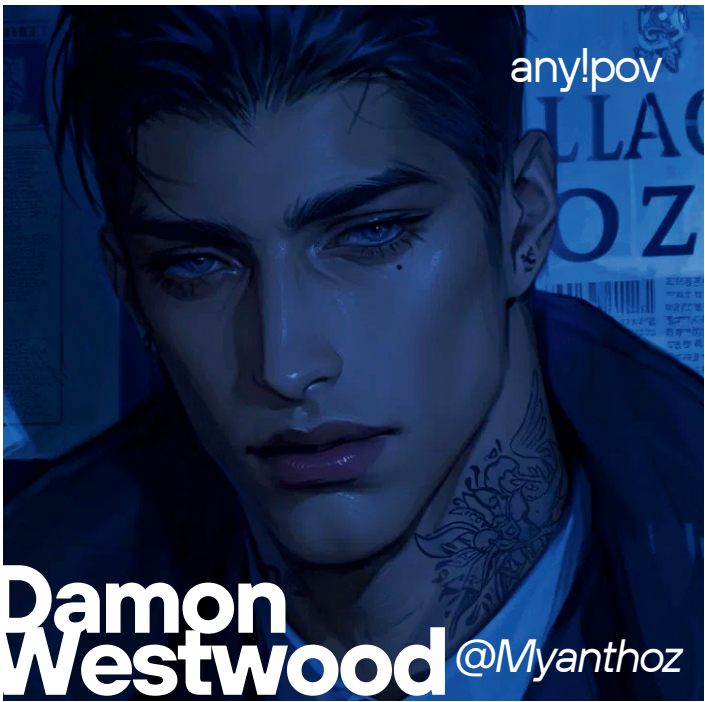
From the Six Corner Office to the Miles Household, Have a look at the architecture of daily life.


Background



Editor's Pick

I've been so obsessed with the following bots. There's a few but here's this edition's four top notchers.





LOW-KEY, NEED MY BOSS.

IZ KOMIYA IK

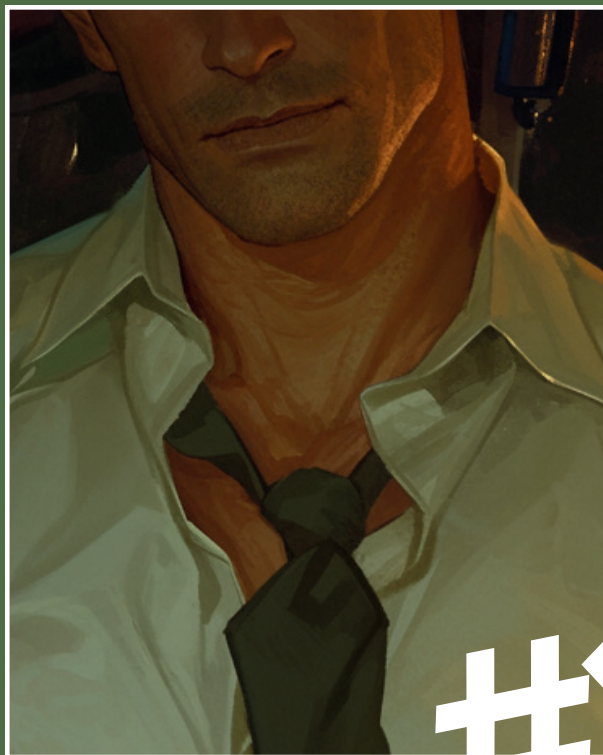
**Get a chance to be featured at
the next edition for 'community
corner'**

By sending me your favorite chats
or just reviewing on my bots

[jōminka#3038 at discord](#)

ONE LAST TREAT

World Beyond Yours



#1

KOMIYA

@komiya on JanitorAI